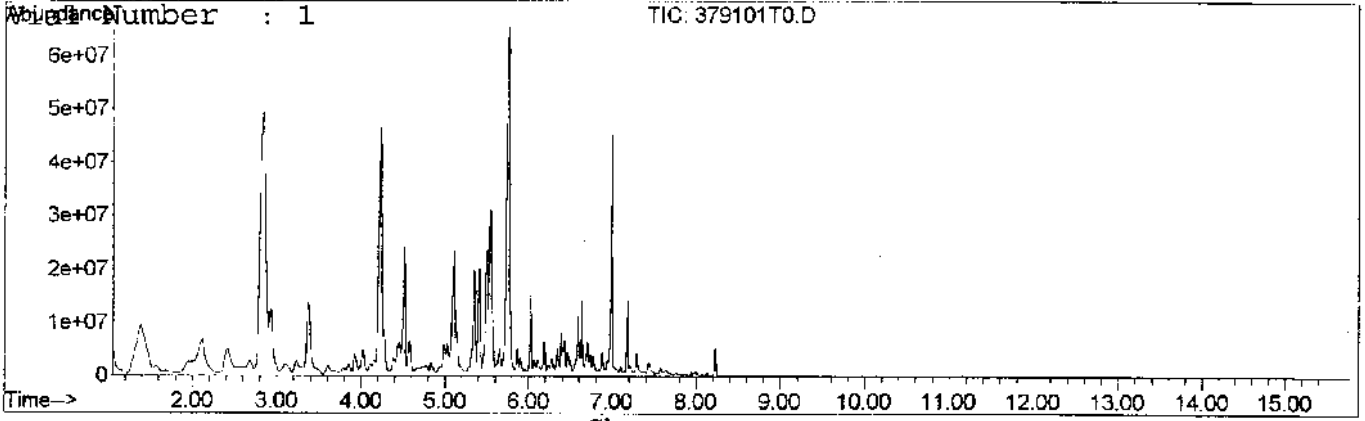
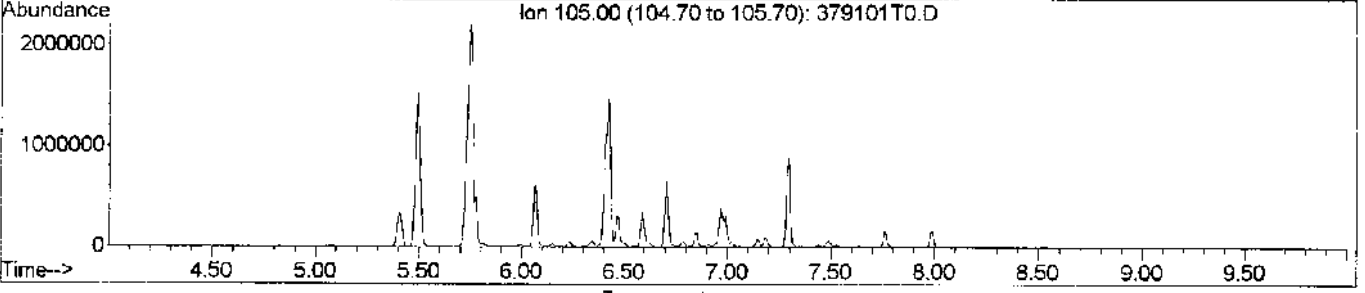
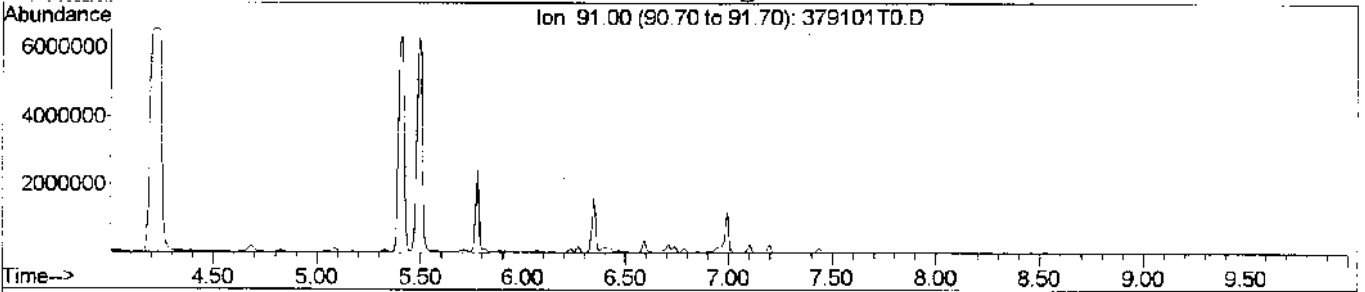


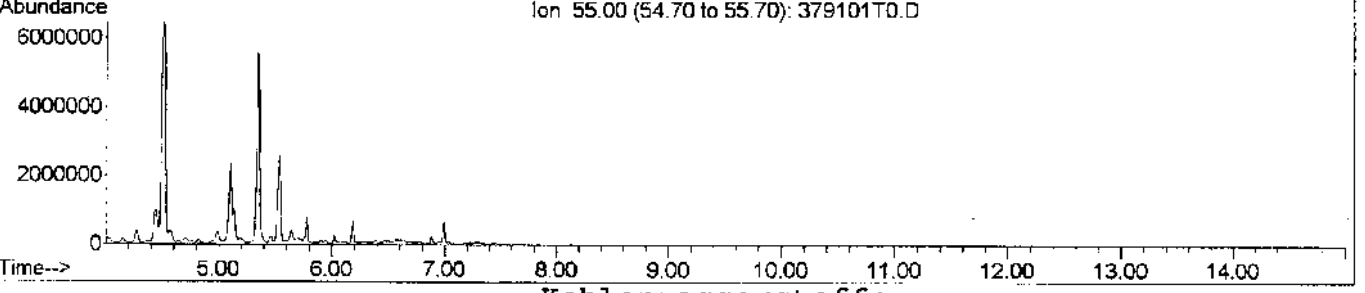
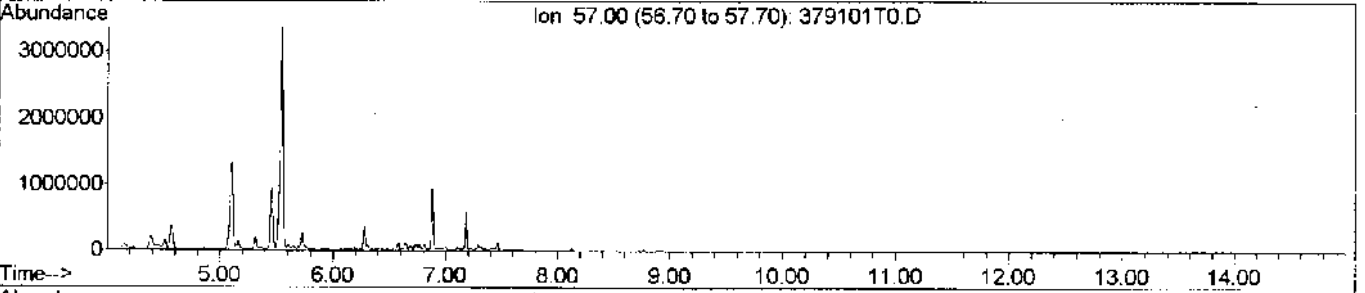
File: G:\SERVICE\LKAPTU_3\GRUPPE31_ARCHIVABLAG\GC\2003\3791\37
Operator: manuela/ Tüte Nr.:031051
Date Acquired: 19 Sep 2003 12:16 pm
Instrument: GC/MS Ins
Method File: TSCHN
Sample Name: Pr.1-1.OG Podest/ 200 ml
Misc Info: ZB-5 30m 180-10-9-6-12 rot M2



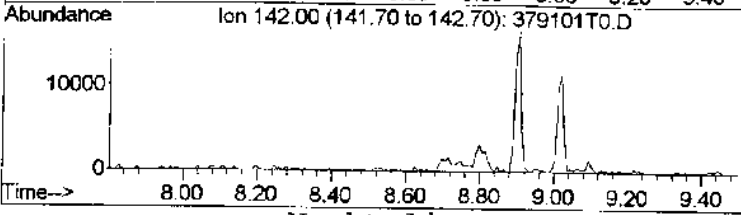
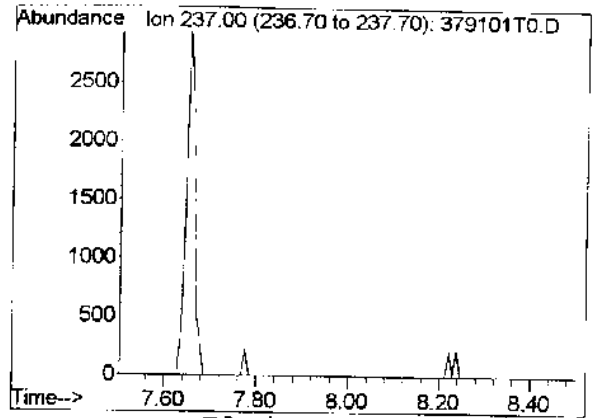
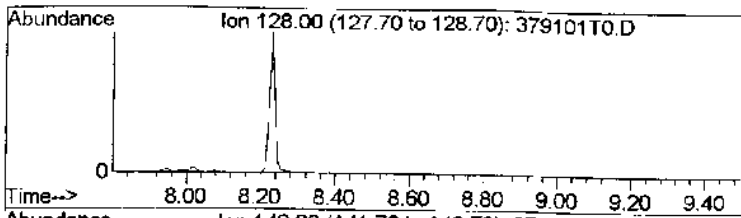
Chromatogramm



Aromaten

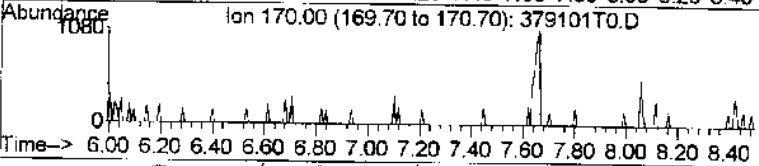
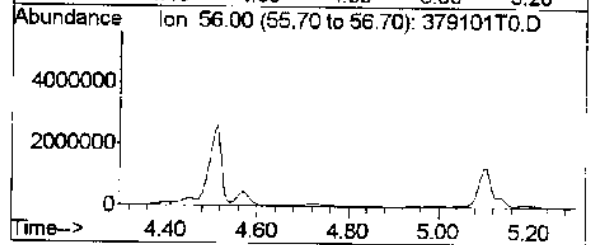
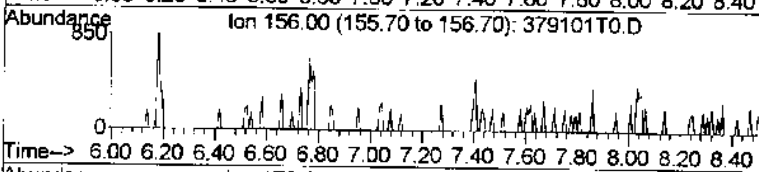
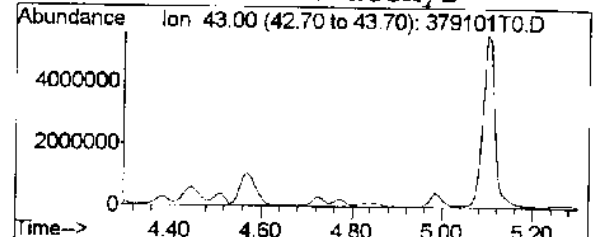
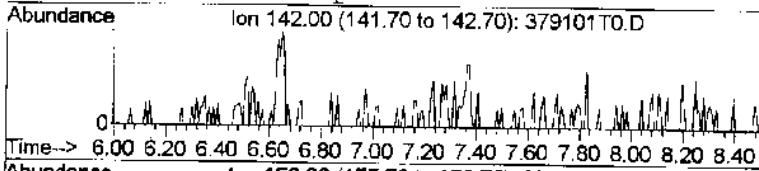


Kohlenwasserstoffe



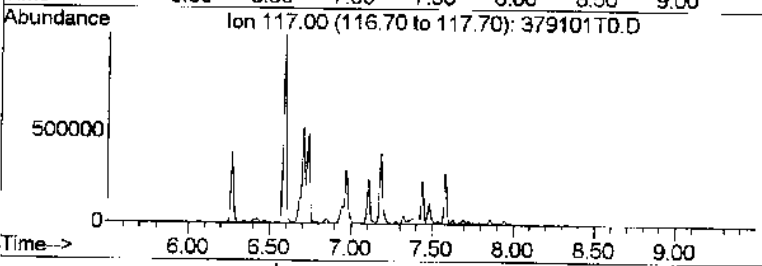
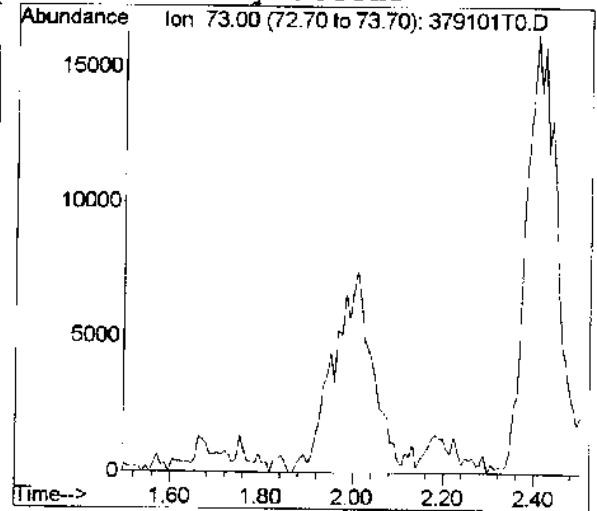
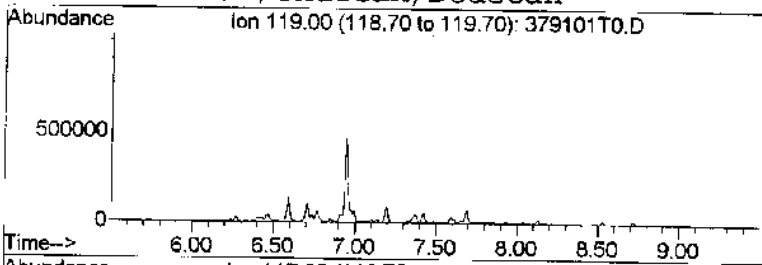
Naphtaline

Bleitetraethyl



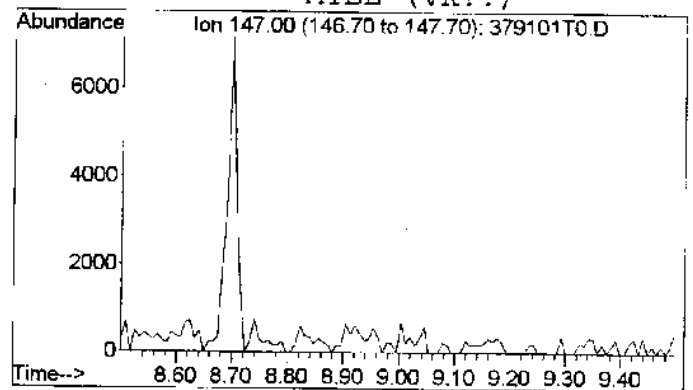
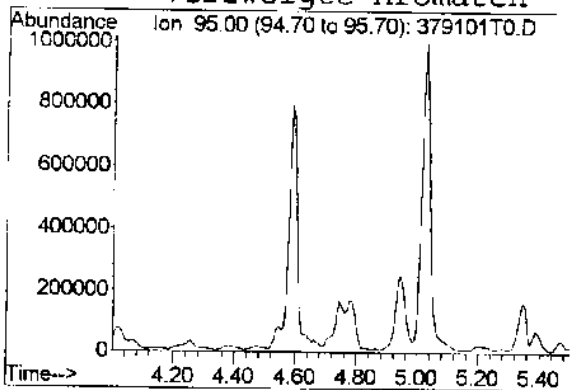
Decan/Undecan/Dodecan

Butylacetat



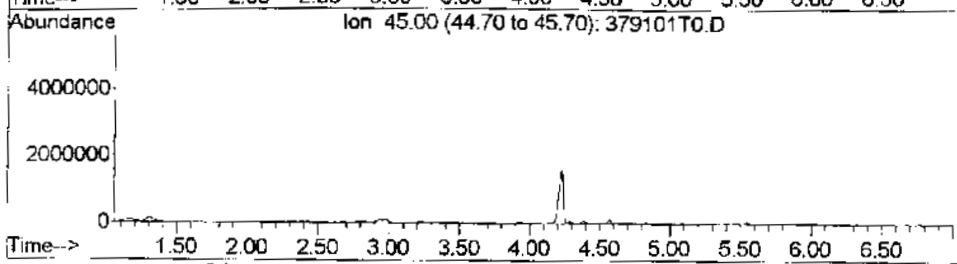
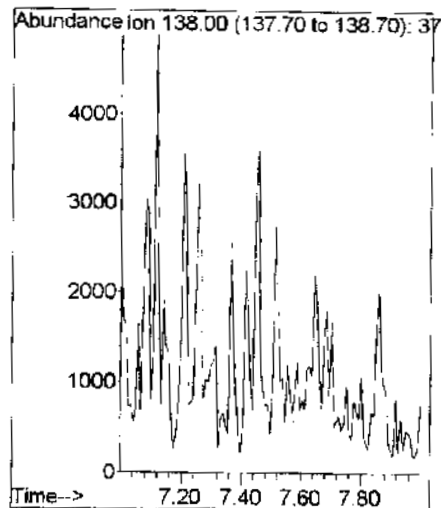
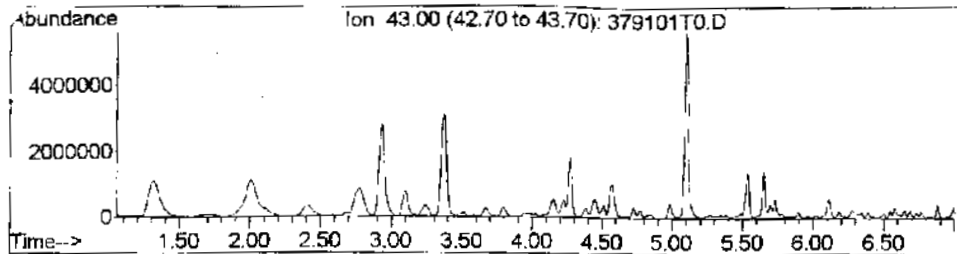
verzweigte Aromaten

MTBE (VK!!)



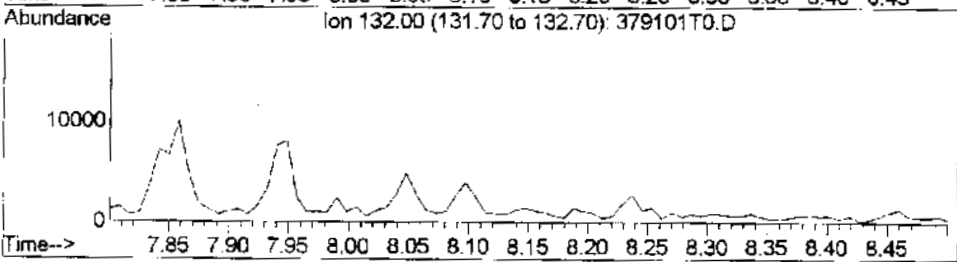
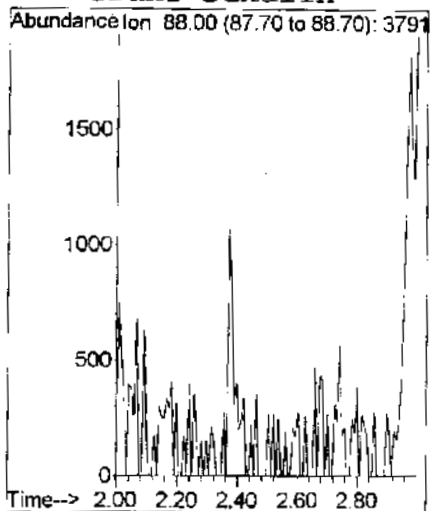
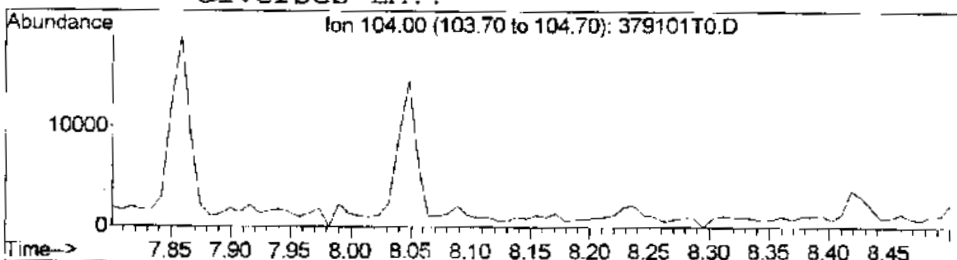
Cyclohexen

Methylbenzothiophen



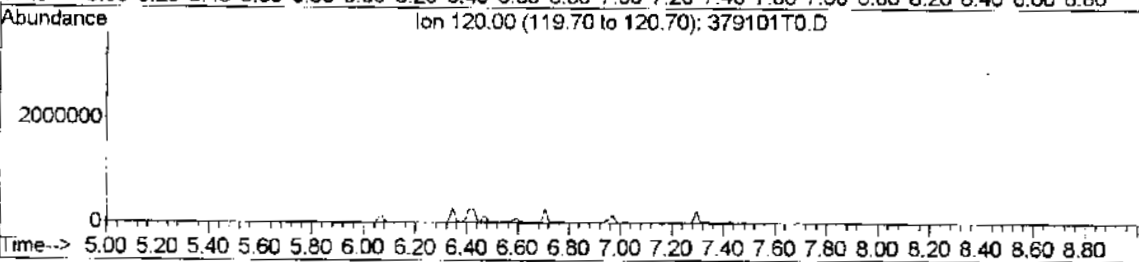
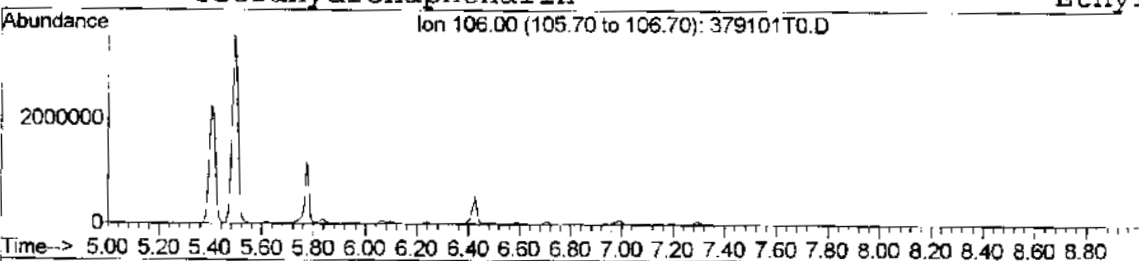
diverses LM!!

trans Dekalin

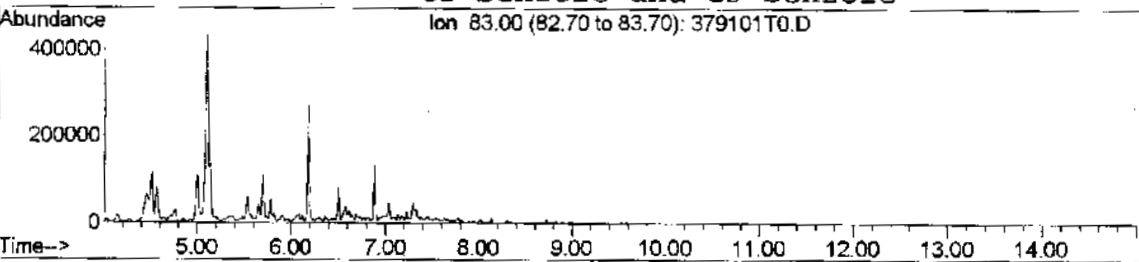


Tetrahydronaphthalin

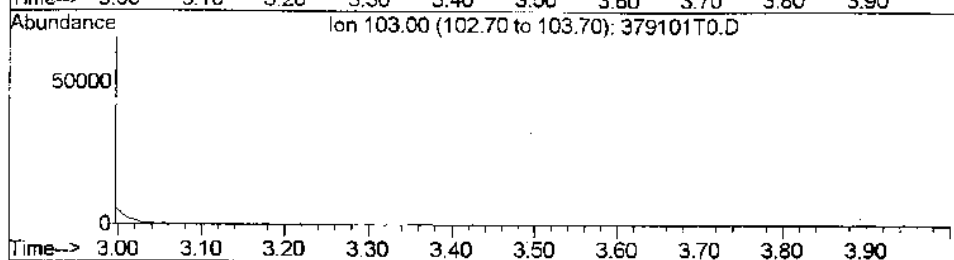
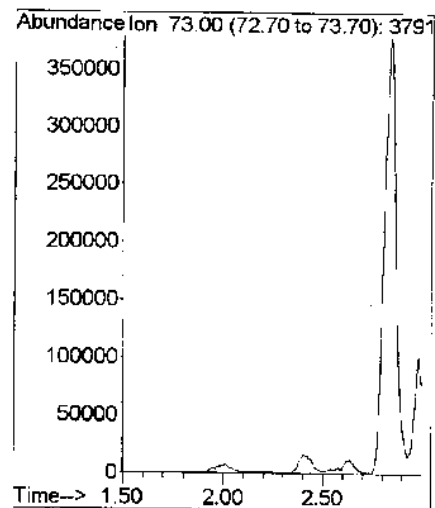
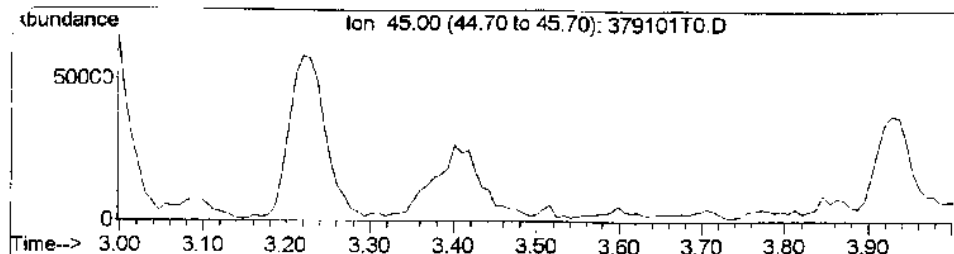
Ethylacetat



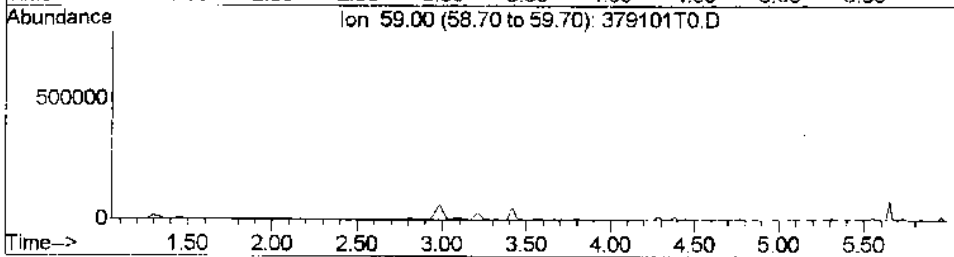
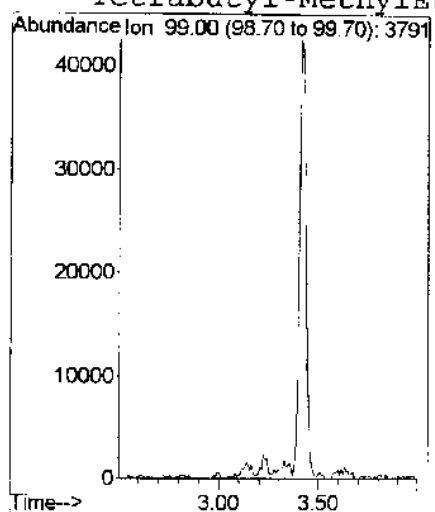
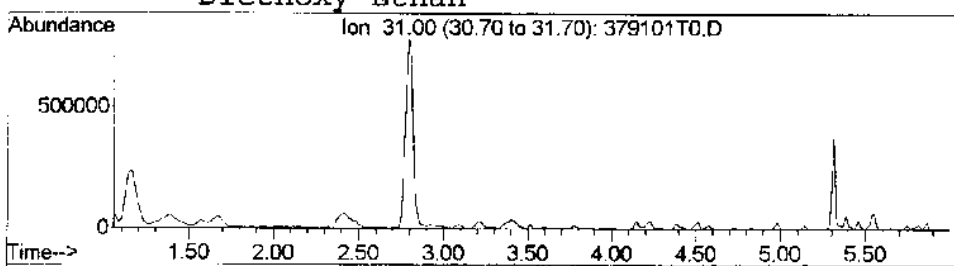
C2-Benzole und C3-Benzole



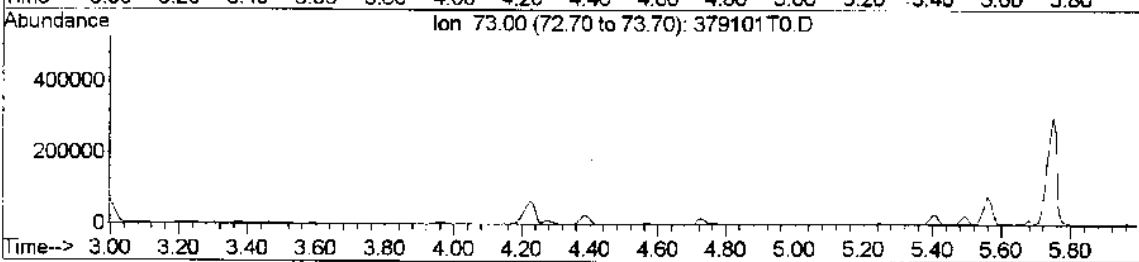
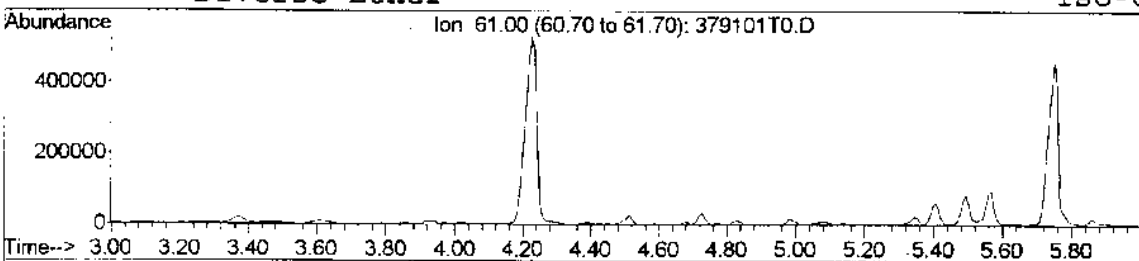
ungesaettigte und cyclo-Alkane



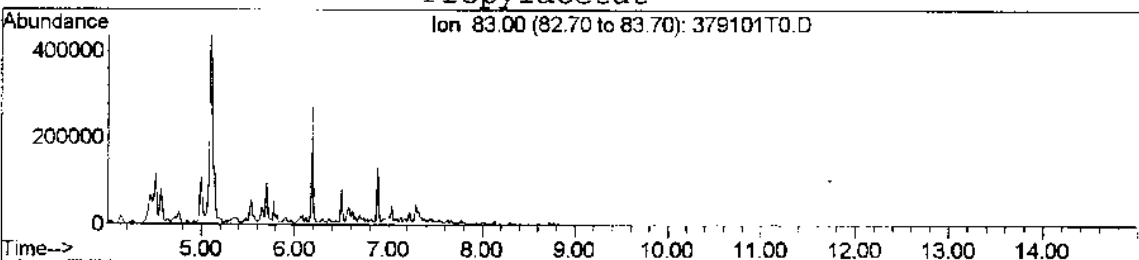
Tetrabutyl-Methyleth



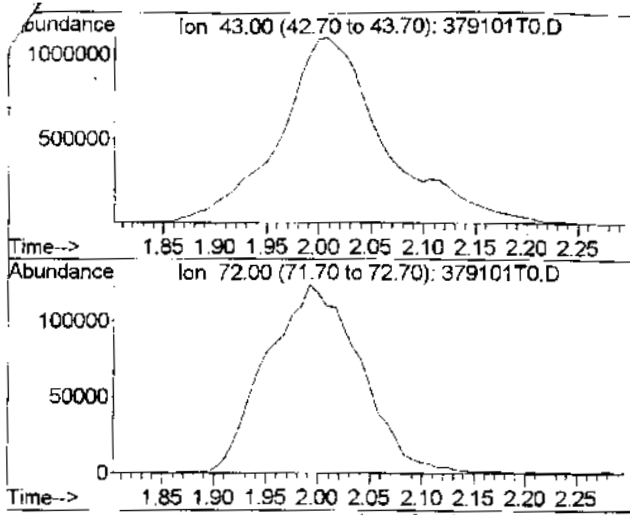
Iso-Oktan



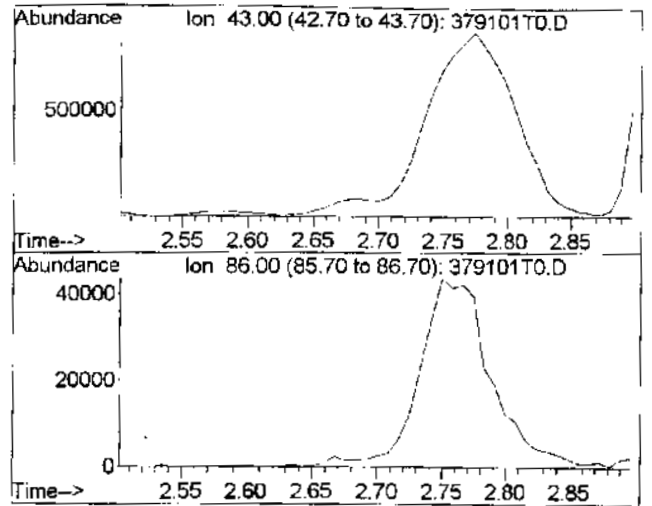
Propylacetat



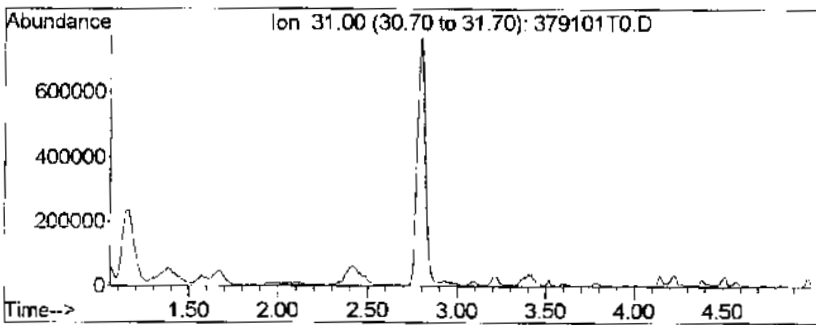
ungesaettigte und cyclo-Alkane



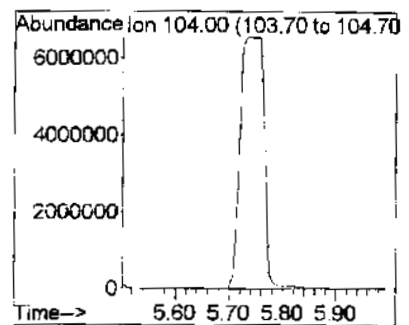
Butanon (Spiritus!!!)



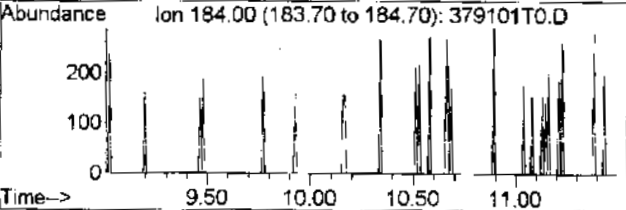
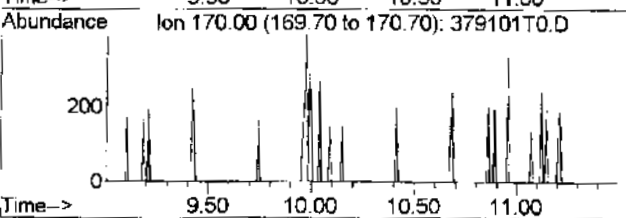
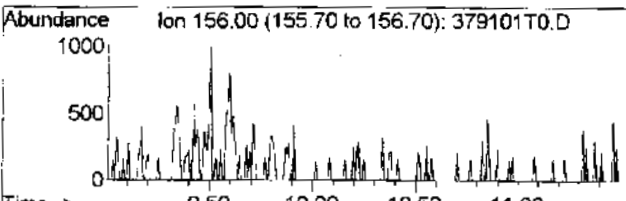
Methyl-Butanon (Spiritus!!)



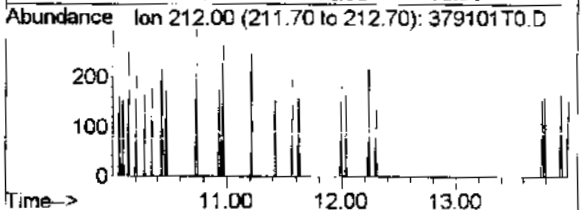
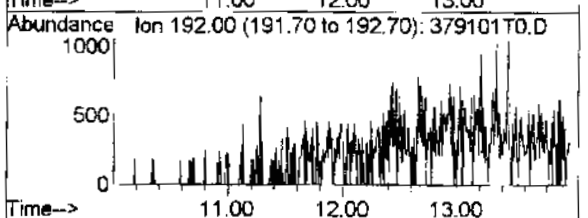
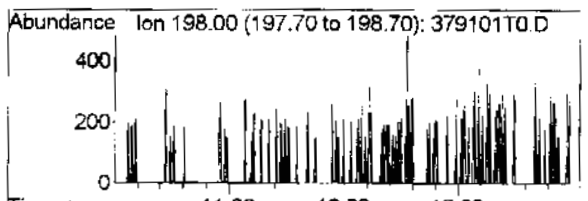
Alkohole



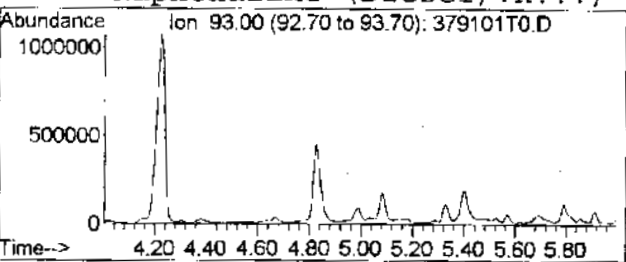
Styrol!!!



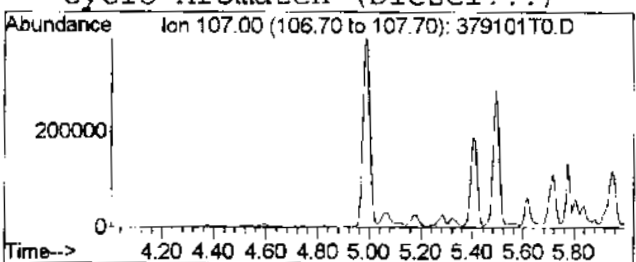
Naphthaline (Diesel/VK!!!)



cyclo-Aromaten (Diesel!!!)

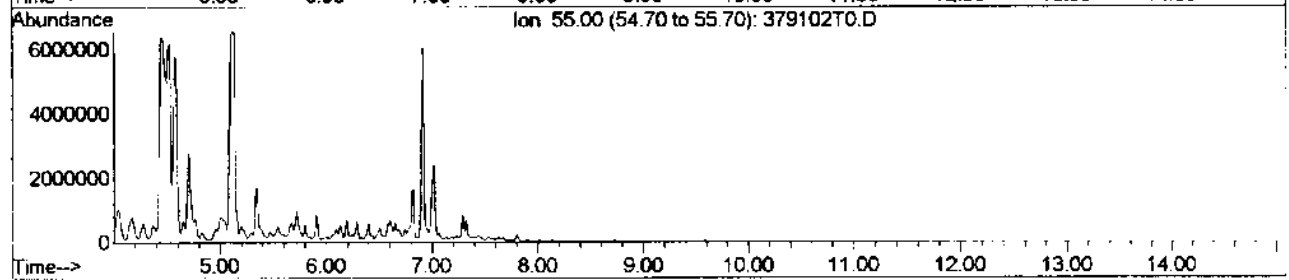
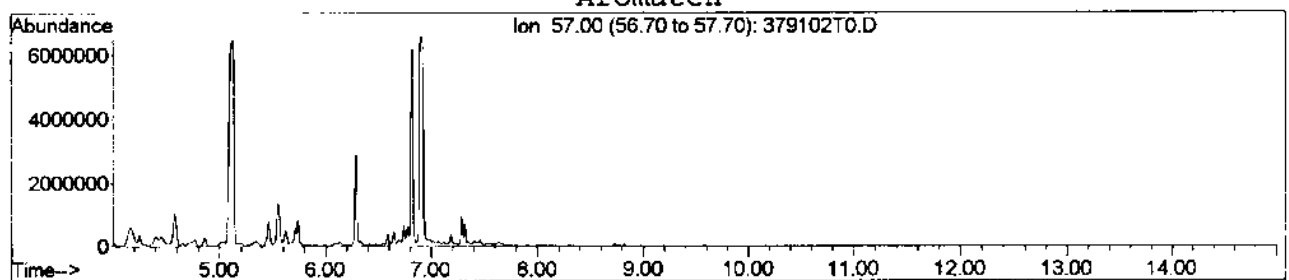
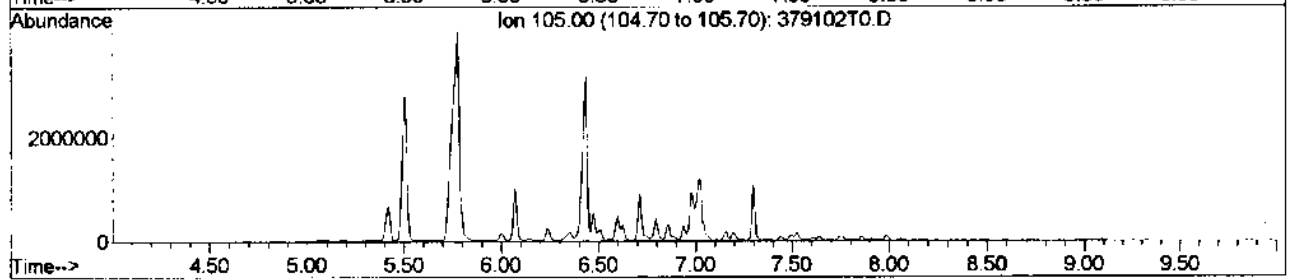
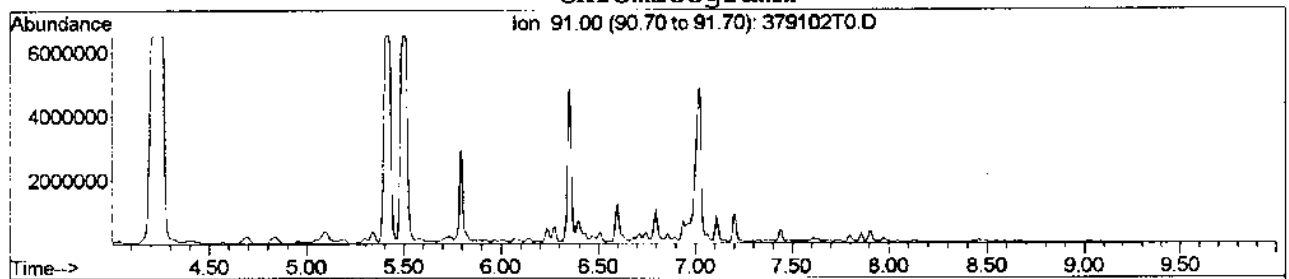
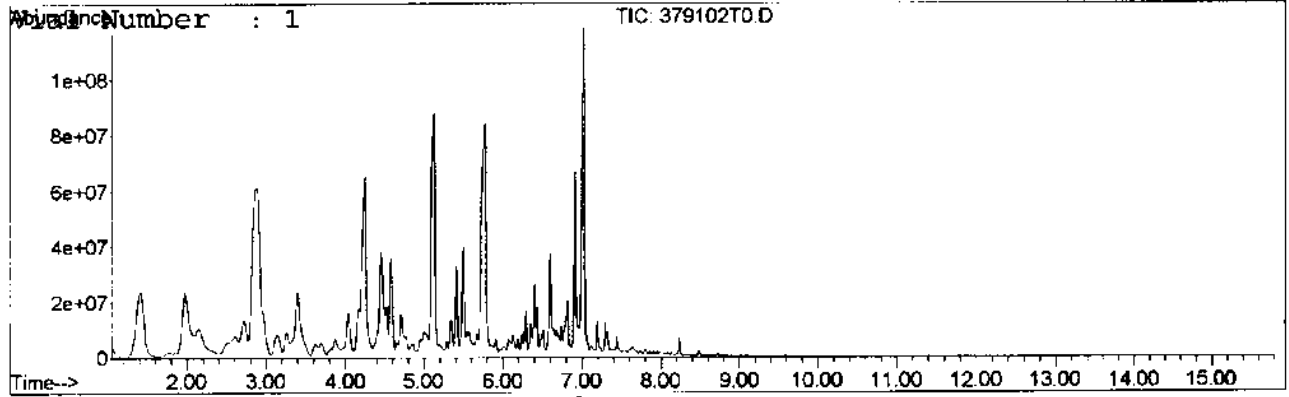


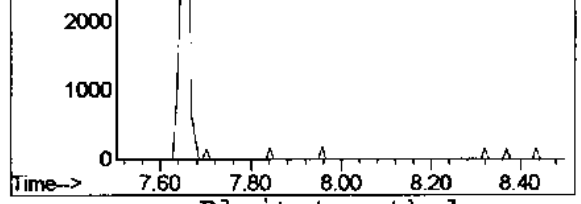
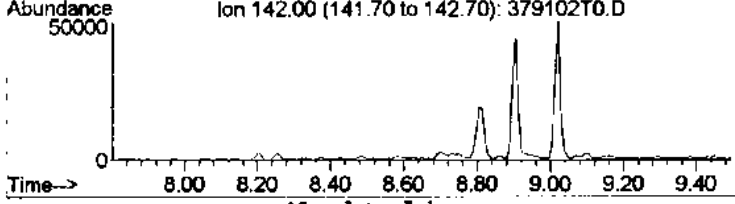
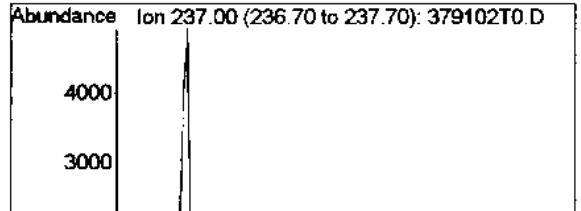
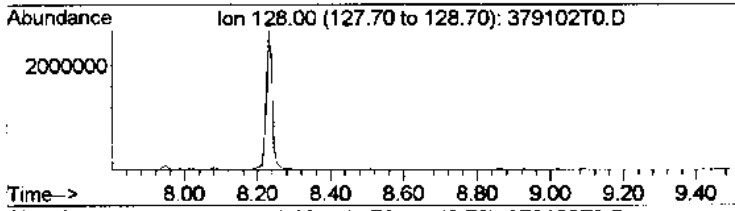
Pyridine/Terpene



Pyridine/Terpene

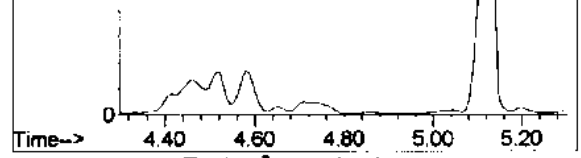
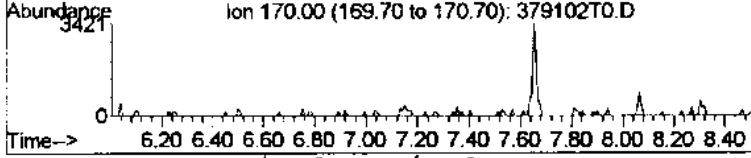
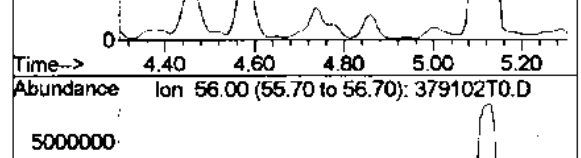
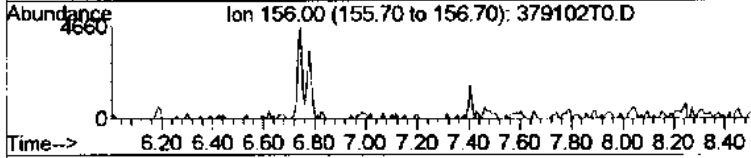
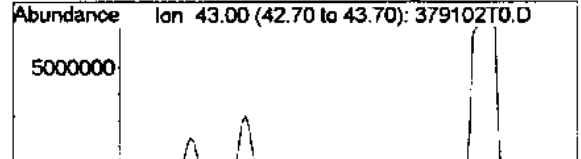
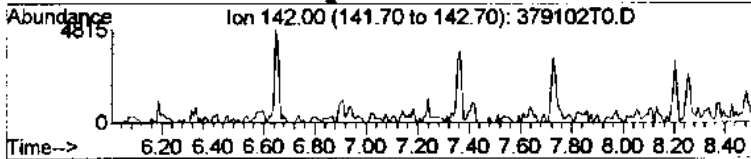
File: G:\SERVICE\LKAPTU_3\GRUPPE31_ARCHIVABLAGELGC\2003\3791\37
Operator: manuela/ Tüte Nr.:031052
Date Acquired: 19 Sep 2003 9:57 am
Instrument: GC/MS Ins
Method File: TSCHN
Sample Name: Pr.2-1.OG Bobela Podest / 300 ml
Misc Info: ZB-5 30m 180-10-9-6-12 rot M4





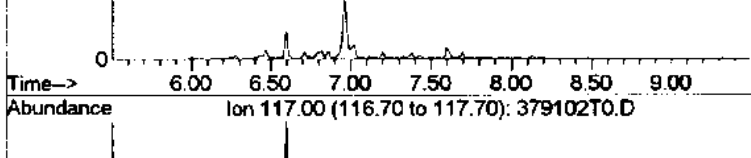
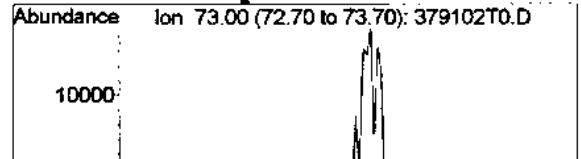
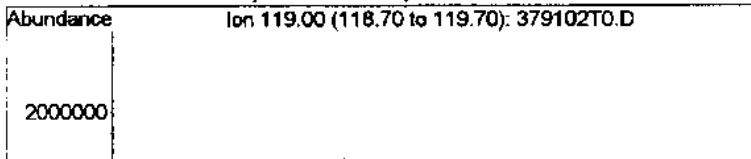
Naphtaline

Bleitetraethyl



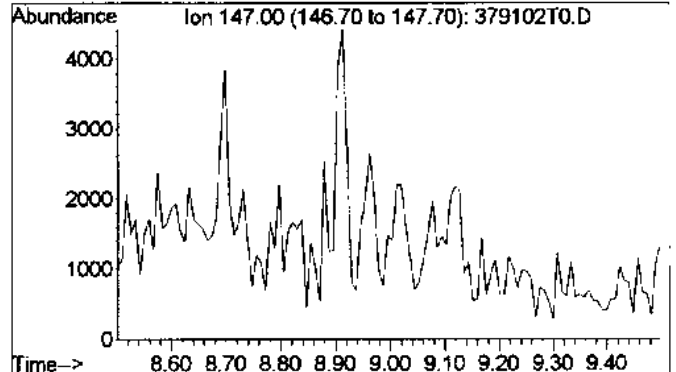
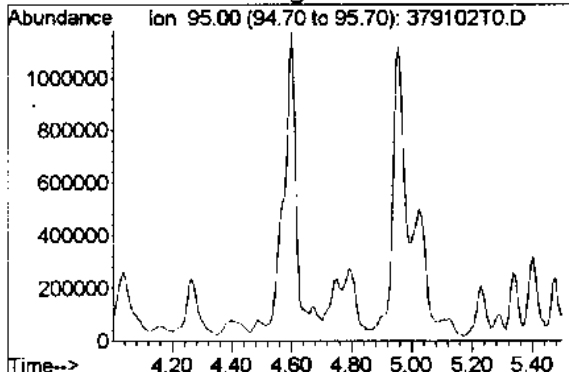
Decan/Undecan/Dodecan

Butylacetat



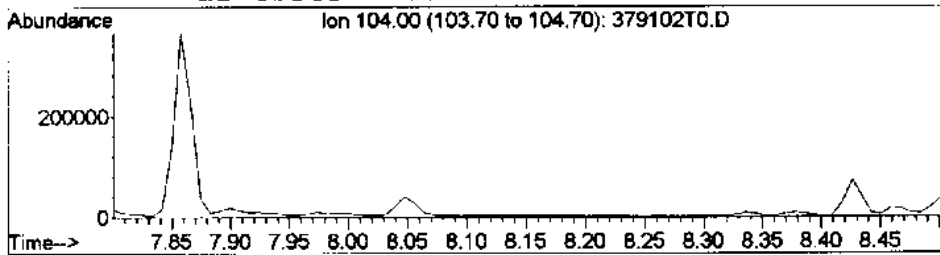
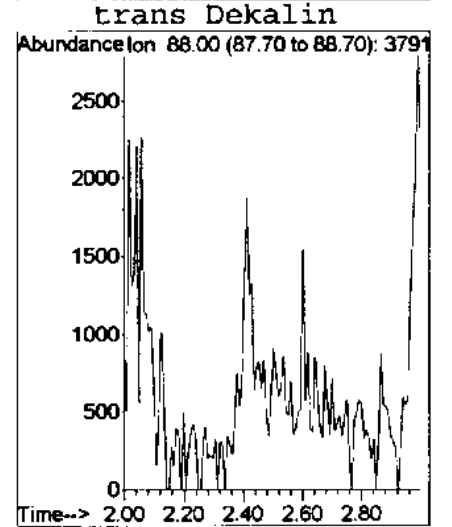
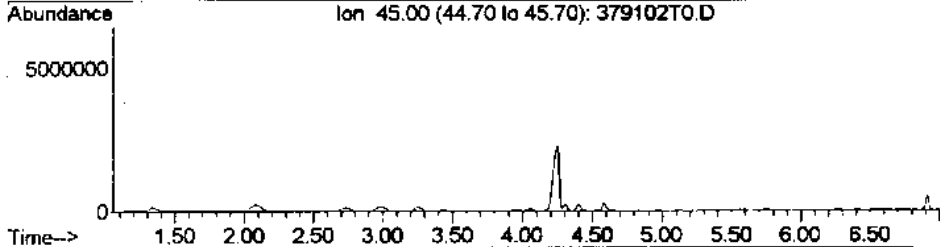
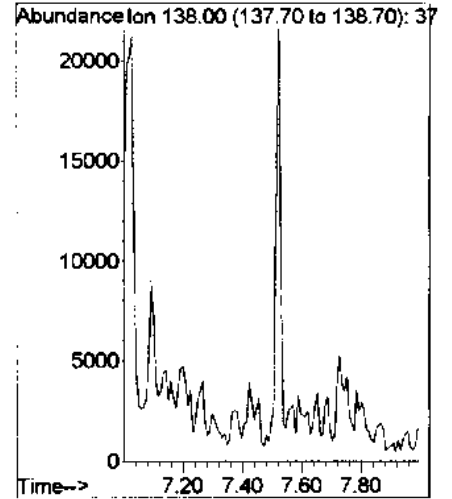
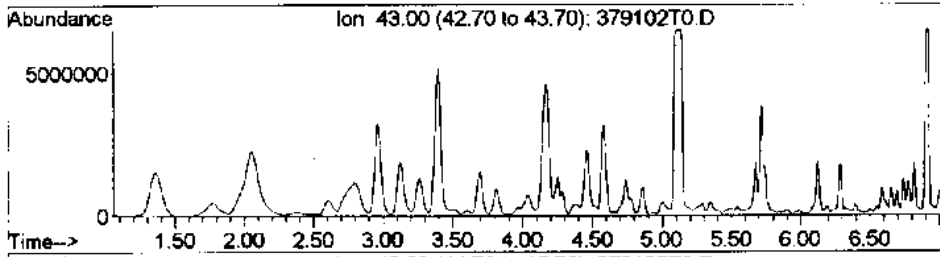
verzweigte Aromaten

MTBE (VK!!)

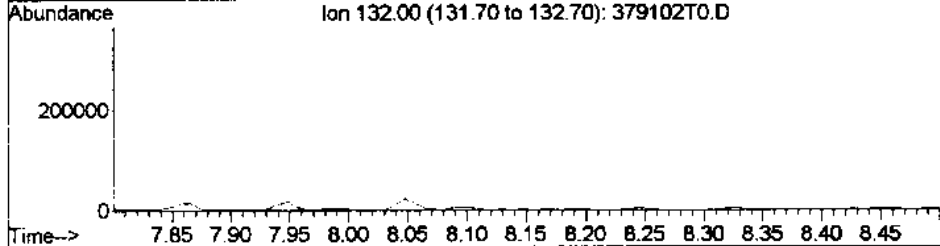


Cyclohexen

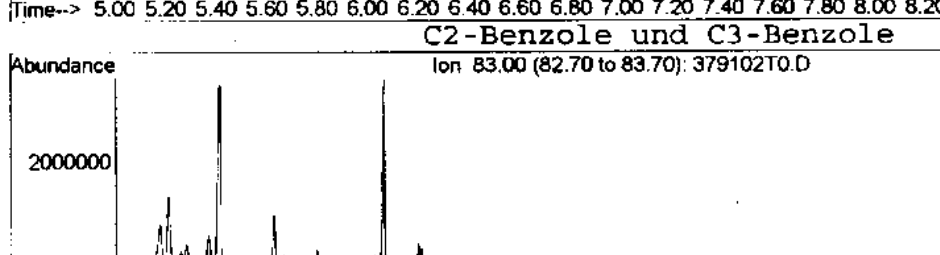
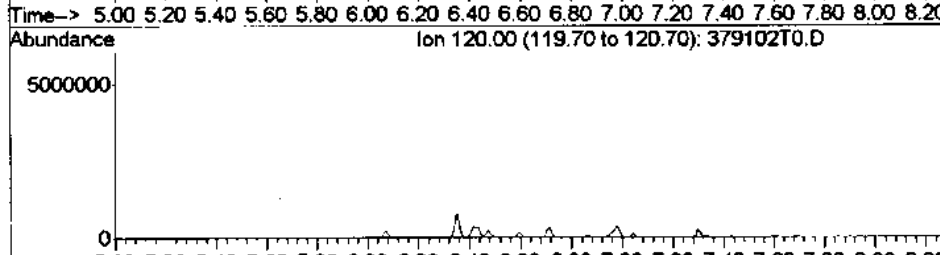
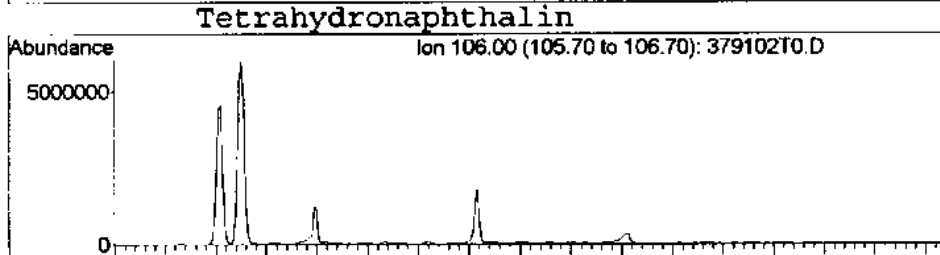
Methylbenzothiophen



trans Dekalin



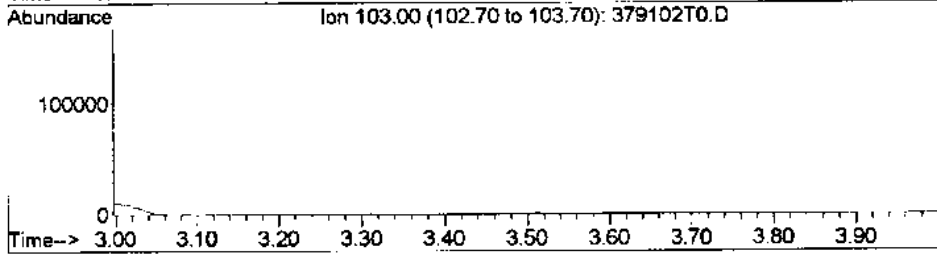
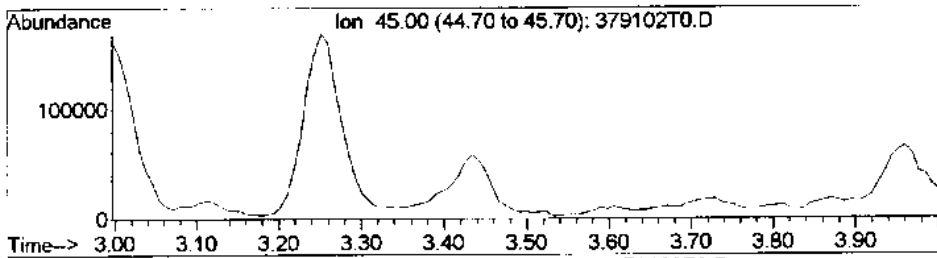
Ethylacetat



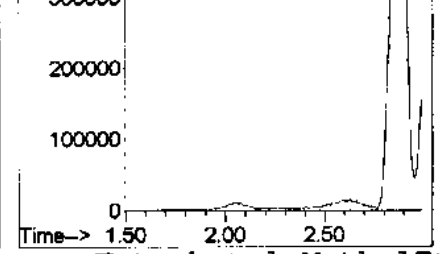
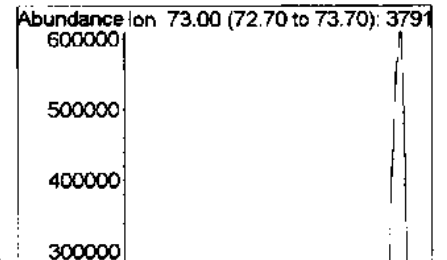
Tetrahydronaphthalin

C2-Benzole und C3-Benzole

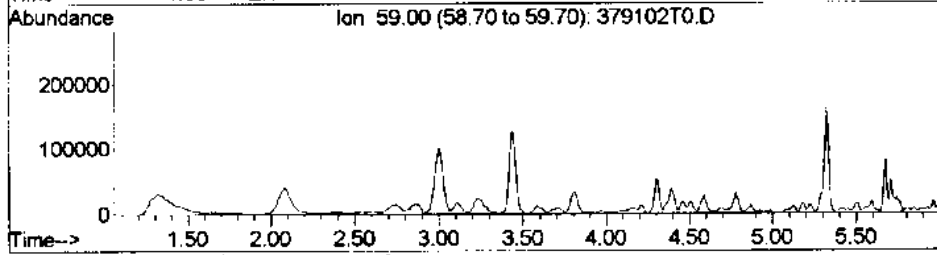
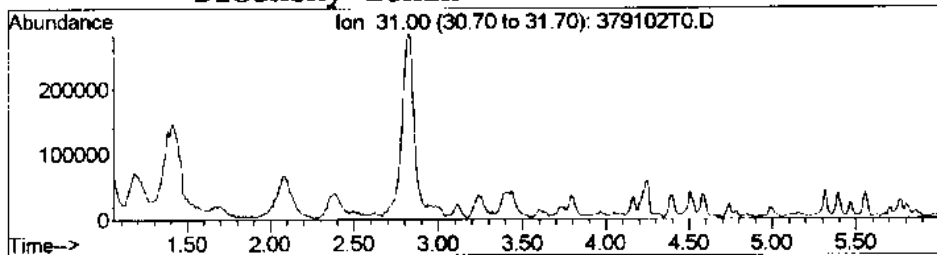
ungesaettigte und cyclo-Alkane



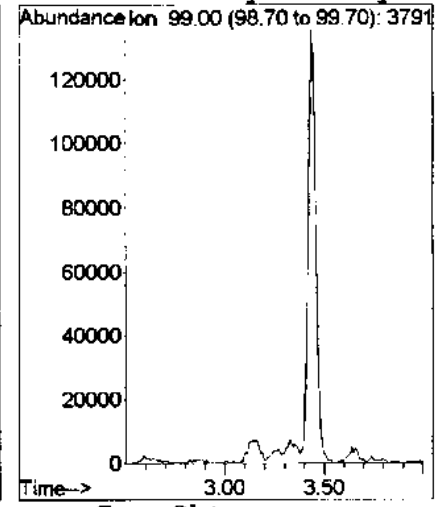
Diethoxy-Ethan



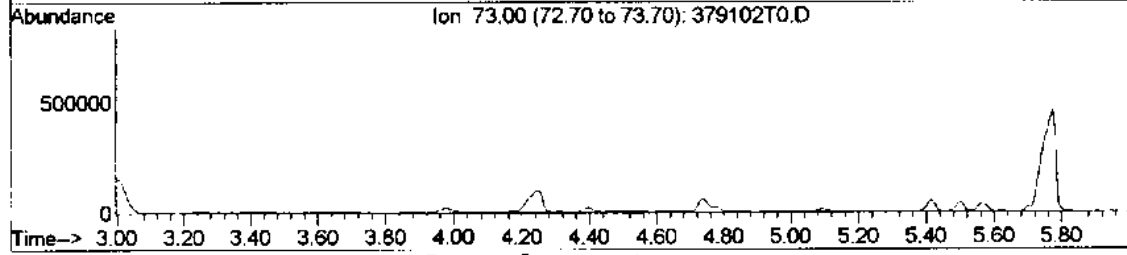
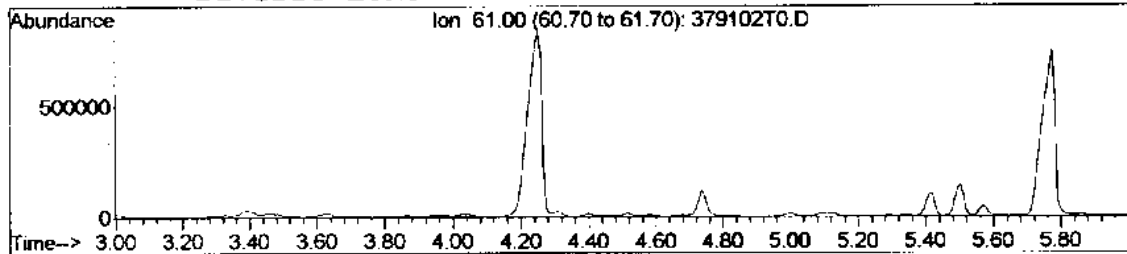
Tetrabutyl-Methyleth



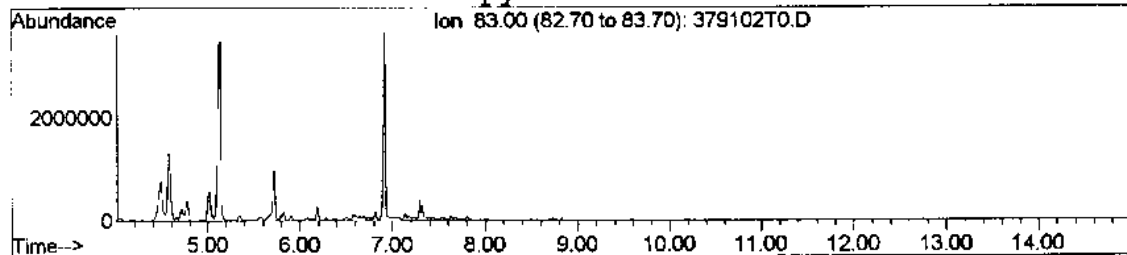
Diverse Ether



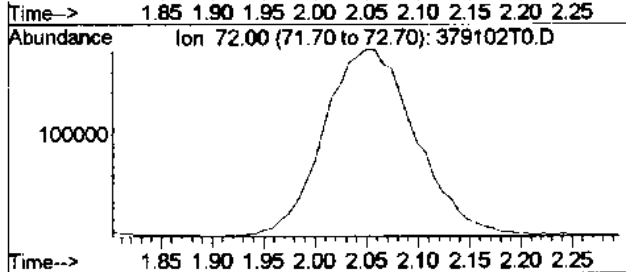
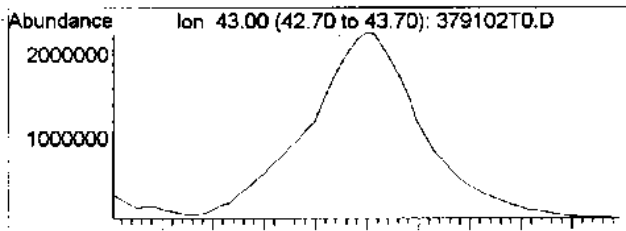
Iso-Oktan



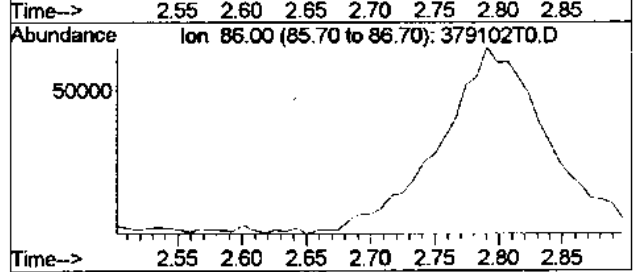
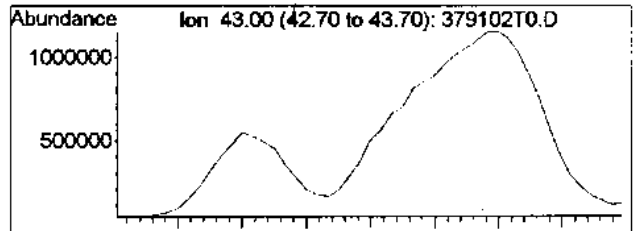
Propylacetat



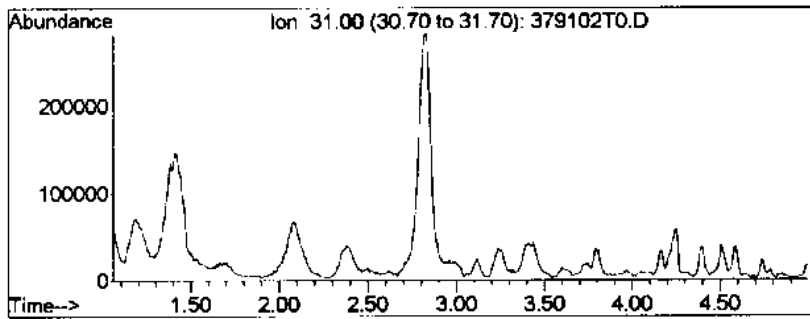
ungesaettigte und cyclo-Alkane



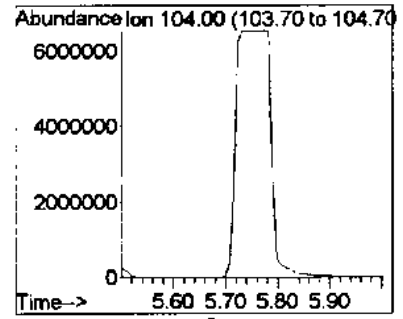
Butanon (Spiritus!!!)



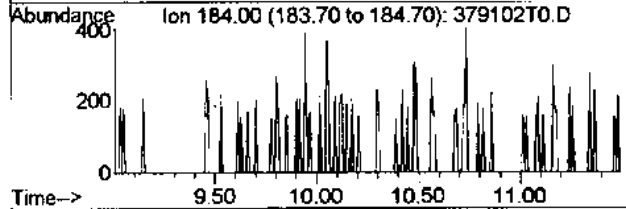
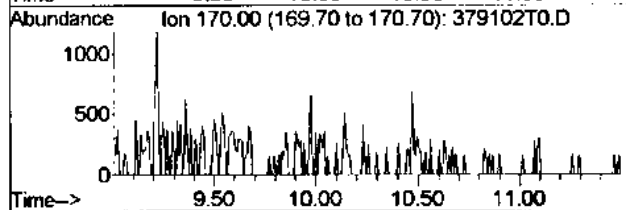
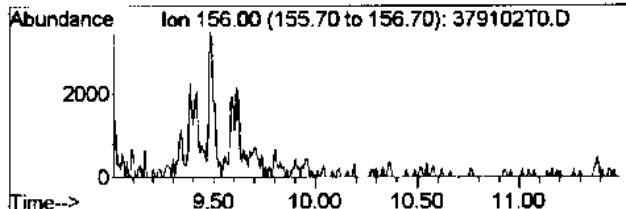
Methyl-Butanon (Spiritus!!!)



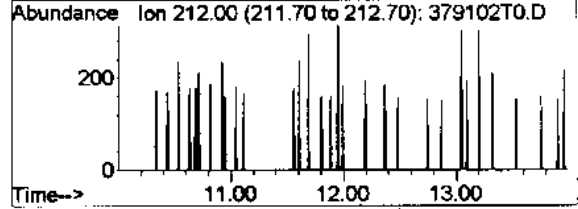
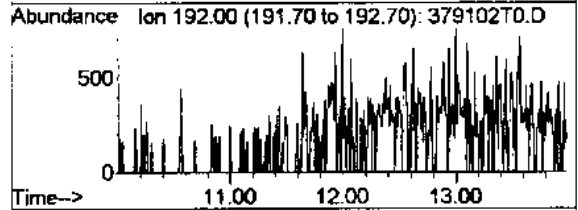
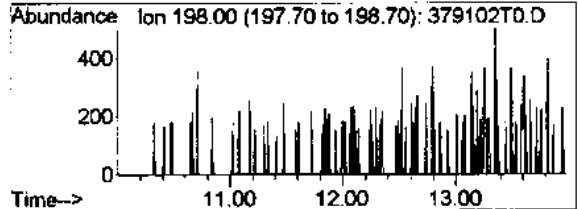
Alkohole



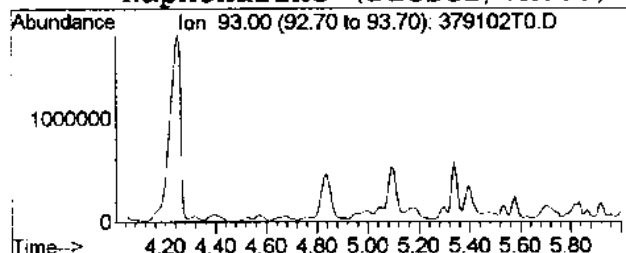
Styrol!!!



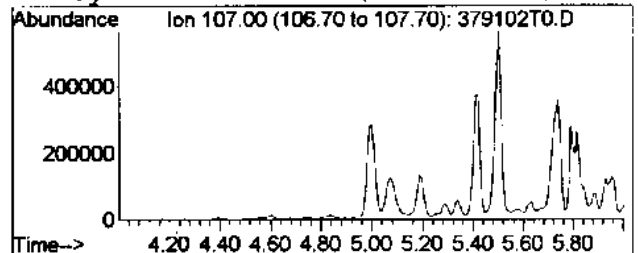
Naphthaline (Diesel/VK!!!)



cyclo-Aromaten (Diesel!!!)



Pyridine/Terpene



Pyridine/Terpene